



# Swahili

Made in Italy  
distributed by

*firenzecolor*

Specialty Plasters in the Historical Tradition

[www.firenzecolor.com](http://www.firenzecolor.com)

New York + Miami

877-347-3693





SWS 14528



SWS 14551



SWS 14550



SWS 14529



SWS 14548



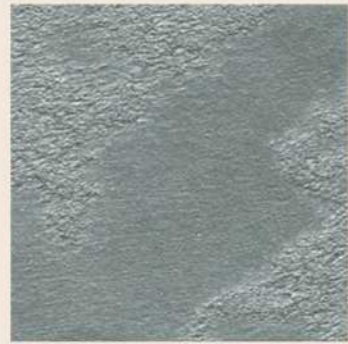
SWS 14549



SWS 14530



SWS 14542



SWS 14509



SWS 14531



SWS 14540



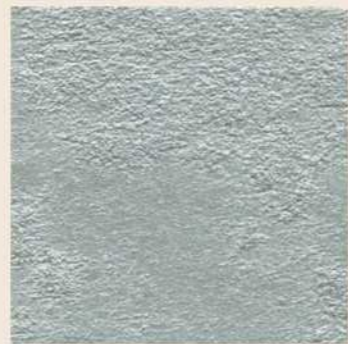
SWS 14510



SWS 14543



SWS 14541



SWS 14511

# Swahili





# Swahili



Rivestimento decorativo testurizzato per interni ad effetto metallizzato oro e argento

Applicare SWAHILI con pennello "spalter", in uno o due strati. Il prodotto può essere diluito con massimo 20% di acqua in funzione dell'effetto estetico desiderato. Resa: 6-7 m<sup>2</sup>/l. Per maggiori informazioni consultare la scheda tecnica.

Decorative textured interior trowel-on coating with gold and silver metallic patterns

Apply SWAHILI with "spalter" brush, in one or two layers. The product can be diluted with maximum 20% of water according to the desired effect. Yield: 6-7 m<sup>2</sup>/l. For more information please check the technical data sheet.

Revêtement décoratif texturisé pour intérieurs à effet métallisé or et argent

Appliquer SWAHILI avec pinceau type "spalter" en une ou deux couches. Le produit peut être dilué avec 20% d'eau maximum, en fonction de l'effet esthétique désiré. Rendement: 6-7 m<sup>2</sup>/l. Pour plus d'informations contrôler la fiche technique.

Texturierte dekorative Innenwandbeschichtung mit metallisiertem Gold und Silber Effekt.

Eine oder zwei Schichten SWAHILI, mit einem „Spalter Pinsel“ auftragen mit maximal 20% Wasser verdünnen. Das Produkt kann je nach dem gewünschten ästhetischen Effekt mit bis zu 20% Wasser verdünnt werden. Ergiebigkeit: 6-7 m<sup>2</sup>/l. Für weitere Info bitte siehe technisches Merkblatt.



SWAHILI BASE SILVER

# Swahili



SWAHILI BASE GOLD





SWS 14503



SWS 14502



SWS 14501



SWS 14506



SWS 14555



SWS 14500



SWS 14504



SWS 14554



SWS 14532



SWS 14505



SWS 14552



SWS 14533



SWS 14507



SWS 14553



SWS 14535

# Swahili







SWG 14700



SWG 14722



SWG 14721



SWG 14732



SWG 14733



SWG 14736



SWG 14701



SWG 14720



SWG 14719



SWG 14710



SWG 14731



SWG 14726



SWG 14702



SWG 14706



SWG 14718



SWG 14708



SWG 14729



SWG 14724



SWG 14703



SWG 14704



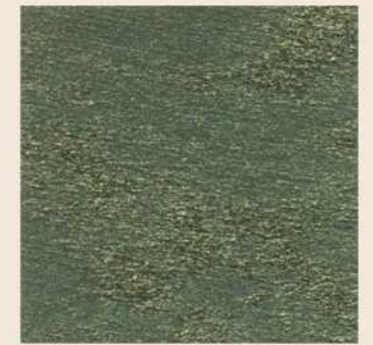
SWG 14717



SWG 14709



SWG 14728



SWG 14725



SWG 14707



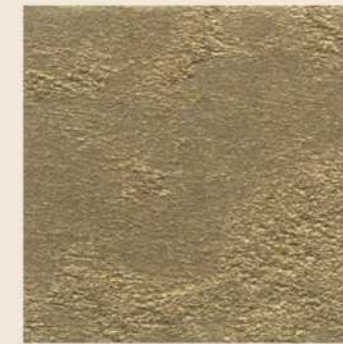
SWG 14705



SWG 14716



SWG 14711

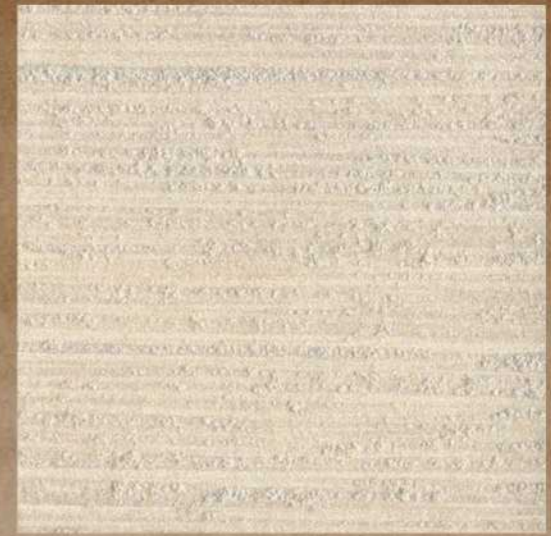


SWG 14730



SWG 14727

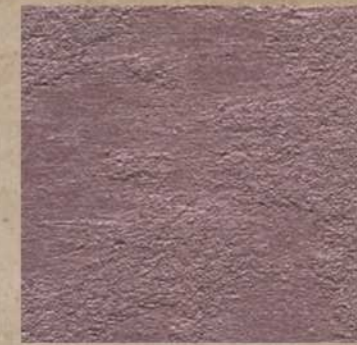




SHANTUNG EFFECT SWS 14602 su NOVALUX E BIANCO



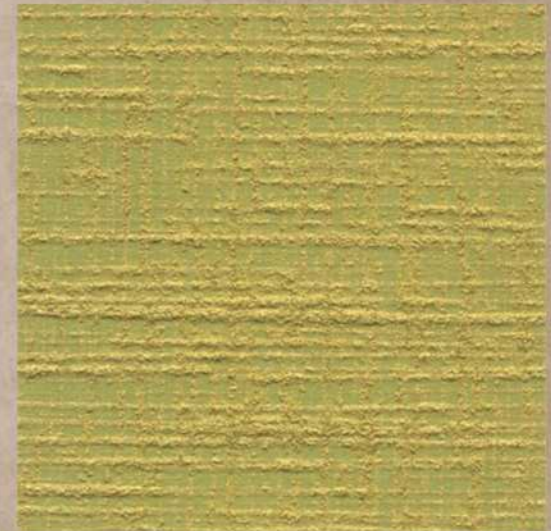
SWS 14603



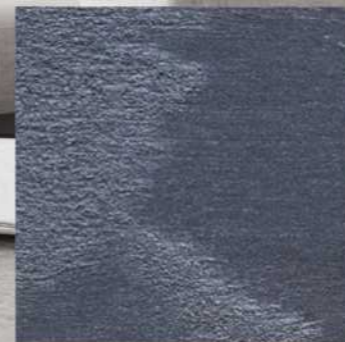
SWS 14609



SWS 14601



TARTAN EFFECT - SWG 14607 su NOVALUX E IP 4147



SWS 14604



SWS 14605



SWS 14608





Made in Italy  
distributed by  
**firenzecolor**  
Specialty Plasters in the Historical Tradition  
[www.firenzecolor.com](http://www.firenzecolor.com)  
New York + Miami  
877-347-3693

NOVACOLOR srl - 47122 Forlì - Italia  
Tel +39 0543 401840 - fax +39 0543 414585  
Via U. Aldrovandi, 10 - info@novacolor.it

AZIENDA CON SISTEMA DI GESTIONE QUALITÀ.  
CERTIFICATO DA DNV = ISO 9001 =

COMPANY WITH QUALITY SYSTEM.  
CERTIFIED BY DNV = ISO 9001 =



NOVACOLOR is committed to reduce the  
environmental impact by producing  
friendly materials.

Made in Italy

